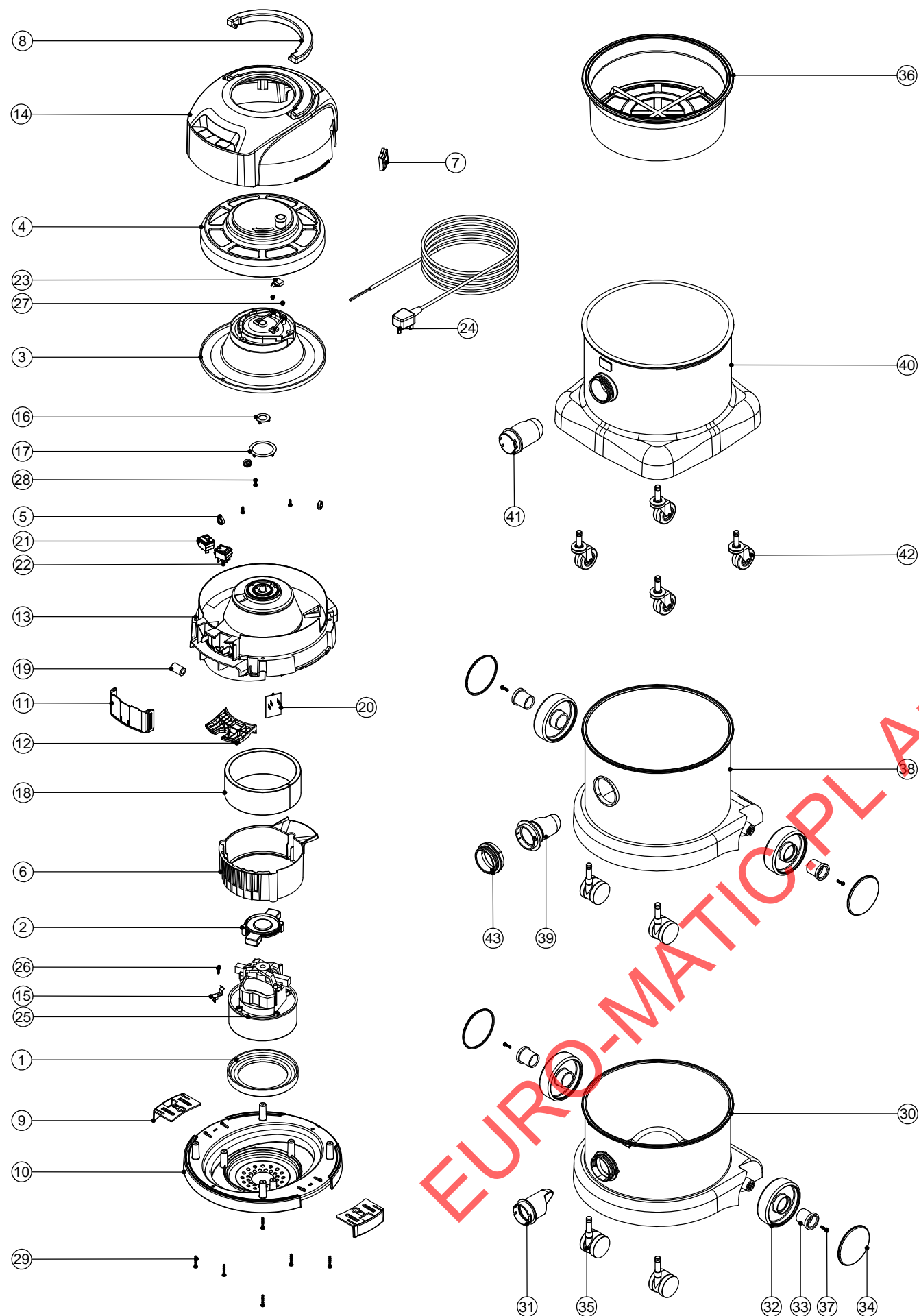


Numatic International Spare Parts

Model No: PVR 200A/ 370A/ 380A EXPLODED DRAWING

234773
DRAWING: DRW-5228 ISS:A02
28/02/2012

NB: FOR WIRING SEE DRAWING: WD-0368

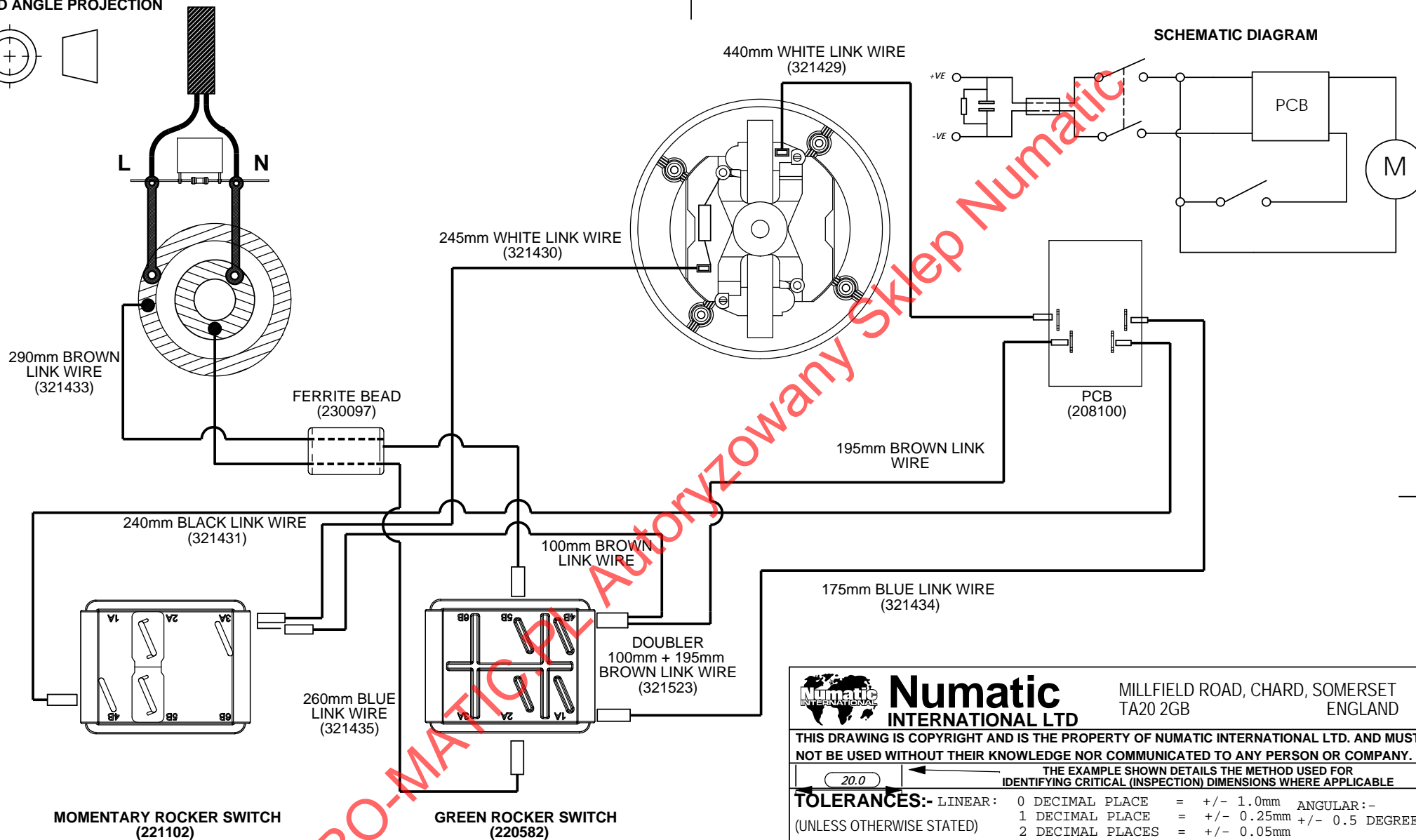
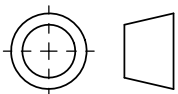


Numatic International Spare Parts

Model No: PVR 200A/ 370A/ 380A EXPLODED DRAWING

ITEM:	PART No:	DESCRIPTION	COMMENTS:
1	227882	BOTTOM MOTOR GASKET	
2	229614	MOTOR PLATE BI -MATERIAL	
3	227132	CABLE REEL MOULDING ASSEMBLY	
	227348	CABLE REEL MOULDING ASSEMBLY (V2 RATED)	USA
4	333113	CABLE REEL COVER ASSEMBLY (C/W WINDER KNOB)	
	333147	CABLE REEL COVER ASSEMBLY (V2 RATED MATERIAL) (C/W WINDER KNOB)	USA
5	227436	ROLLER WHEEL	
6	229621	AIR GUIDE	
7	227108	BLACK CABLE ENTRY	
8	227120	HANDLE	
9	229715	TOGGLE (TWIN SHOT)	
10	229618	BOTTOM MOTOR HOUSING (TWIN SHOT)	
11	229623	SWITCH COVER	
	229738	SWITCH COVER (V2 RATED MATERIAL)	USA
12	237132	WIRE ENTRY ENCLOSURE (PVR FRONT SWITCH)	
	237133	WIRE ENTRY ENCLOSURE V2 FLAME RETARDANT (PVR FRONT SWITCH)	USA
13	237129	TOP MOTOR HOUSING (PVR FRONT SWITCH)	
	237130	TOP MOTOR HOUSING V2 FLAME RETARDANT (PVR FRONT SWITCH)	USA
14	325812	PVR BLACK AUTOSAVE COVER + HANDLE. PRINT WHITE NUMATIC+GREEN AUTOSAVE FLOWER LOGO	
15	208379	SPRING CLIP (LAMB DAF MOTOR)	
16	227141	INNER CONTACT RING	
17	227142	OUTER CONTACT RING	
18	203020	POD SIDE FELT	
19	230097	AXIAL FERRITE BEAD	
20	321990	1200W PCB BOARD	
	208300	AUTOSAVE 2 SPEED CONTROL PCB (120V)	
21	221102	RED MOMENTARY ROCKER SWITCH (BLACK BODY / RED ILLUMINATION WINDOW)	
22	220582	GREEN ROCKER SWITCH	
23	230096	SUPPRESSOR CAPACITOR ASSEMBLY WITH DISCHARGE RESISTOR	
24	236116	12.5MT X 1MM X 2 CORE (H05 V2V2-F) UK PLUG	
	220251	12.5MT X 1.0MM X 2 CORE CABLE + EURO PLUG	
	220192	12.5MT X 1.0MM X 2 CORE CABLE C/W SWISS PLUG	
	220467	12.5MT X 1MMSQ X 2 CORE M/CABLE + RSA PLUG	
	236044	10.0M X 1.00MM X 2 CORE CABLE (AUSTRALIAN PLUG)	
	236049	10.0M X 1.50MM X 2 CORE CABLE (INDUSTRIAL PLUG)	
	236041	10.0M X 18AWG X 2 CORE CABLE (YELLOW) SJT + CSA PLUG	
25	205403	230V 2 STAGE THRO FLOW TAPER FAN MOTOR (DL21104T) TCO	
	205401	120V 2 STAGE THRO FLOW TAPER FAN MOTOR (DL21101T) TCO	
26	219601	No8 X 3/8 INCH LONG POZI PAN PLASTITE SCREW	
27	219090	M4 X 8MM LONG POZI PAN SEMS SCREW	
28	219101	No8 X 1/2 INCH LONG POZI PAN PLASTITE SCREW	
29	219104	No8 X 1 INCH LONG POZI PAN PLASTITE SCREW	
30	225301	RED 200 DRUM (NO PADS)	
	225191	RED MOULDED DRUM PLUS FACE	
	227374	NNV 200 MIDNIGHT BLUE MOULDED DRUM	
	225304	NNV200 YELLOW MOULDED DRUM	
	225303	NNV200 GREEN MOULDED DRUM	
	225302	NNV200 BLUE MOULDED DRUM	
	225170	NNV/NRV 200 DRUM GREY MOULDED	
31	229768	BAG CONNECTOR (2006)	200 DRUM
32	227640	2 SHOT WHEEL ASSEMBLY	
33	227868	WHEEL HUB FOR 2 SHOT WHEEL	
34	227687	RED TRIM	
	229777	MIDNIGHT BLUE TRIM	
	227690	YELLOW TRIM	
	227638	BLACK TRIM	
	227689	GREEN TRIM	
	227688	BLUE TRIM	
35	204111	50MM TWIN WHEEL CASTOR WITH PU TYRE	
36	207109	12 INCH FILTER (DOUBLE BOTTOM) 160GRM SMS	
37	219105	No8 X 5/8 INCH LONG POZI PAN PLASTITE SCREW	
38	227608	370 RED DRUM	
39	227363	BAG CONNECTOR	370 DRUM
40	225904	RED CONTAINER	380
41	227004	BAG CONNECTOR	380 DRUM
42	204059	2 INCH CASTOR	380 DRUM
43	227396	RED THREADED NECK	

THIRD ANGLE PROJECTION



SCHEMATIC DIAGRAM

Numatic INTERNATIONAL LTD
 MILLFIELD ROAD, CHARD, SOMERSET TA20 2GB ENGLAND

THIS DRAWING IS COPYRIGHT AND IS THE PROPERTY OF NUMATIC INTERNATIONAL LTD. AND MUST NOT BE USED WITHOUT THEIR KNOWLEDGE NOR COMMUNICATED TO ANY PERSON OR COMPANY.

THE EXAMPLE SHOWN DETAILS THE METHOD USED FOR IDENTIFYING CRITICAL (INSPECTION) DIMENSIONS WHERE APPLICABLE

20.0	
TOLERANCES:- LINEAR:	0 DECIMAL PLACE = +/- 1.0mm
	1 DECIMAL PLACE = +/- 0.25mm
	2 DECIMAL PLACES = +/- 0.05mm
	ANGULAR:- +/- 0.5 DEGREE

TITLE:-
 (WD-0368) AUTOSAVE 12 INCH REWIND WIRING DIAGRAM (230V)

DIMNs IN MILLIMETERS	MATERIAL:-	ITEM No(s):- 123339
----------------------	-------------------	-------------------------------

PRINT SIZE A4	NOT TO SCALE	FINISH:-	DRG No:- WD-0368
---------------	--------------	-----------------	----------------------------

All components must be ROHS compliant.

A03	SCHEMATIC DIAGRAM ADDED	marcusa	IanL	10/02/10
REVISION:	CHANGE DETAIL:	DRAWN:	APPD:	DATE: