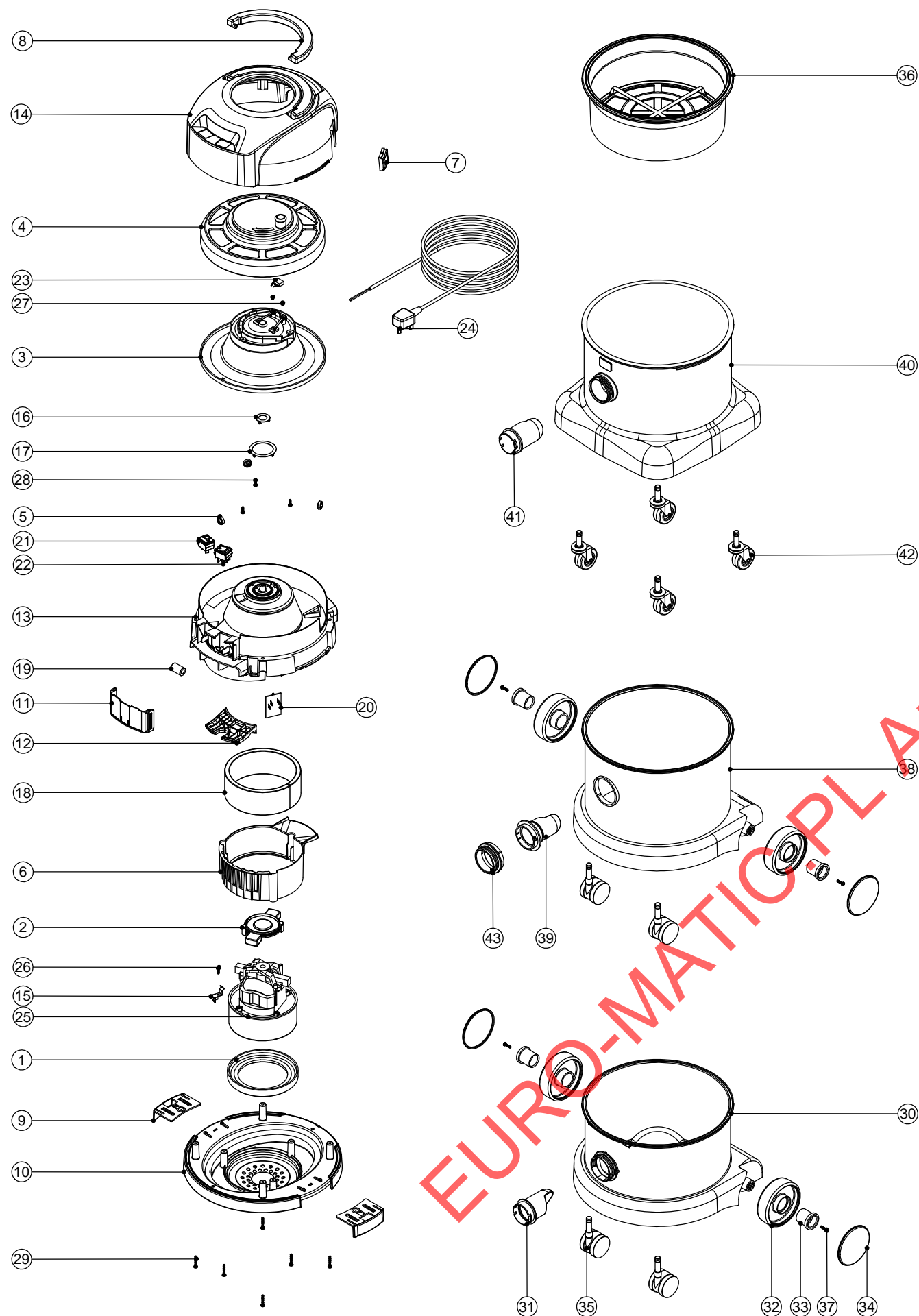


# Numatic International Spare Parts

Model No: PVR 200A/ 370A/ 380A EXPLODED DRAWING

234773  
DRAWING: DRW-5228 ISS:A02  
28/02/2012

NB: FOR WIRING SEE DRAWING: WD-0368

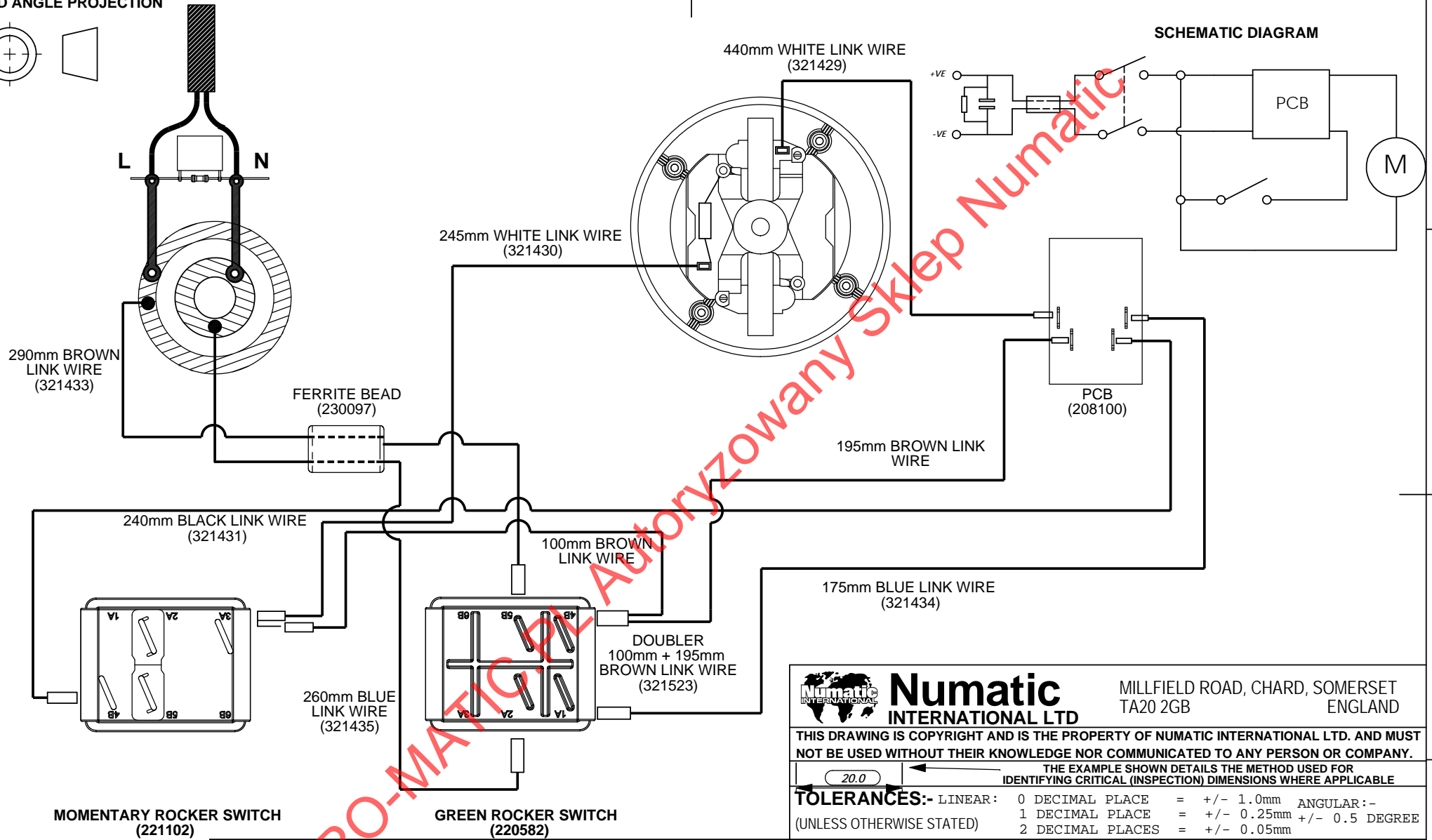
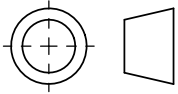


# Numatic International Spare Parts

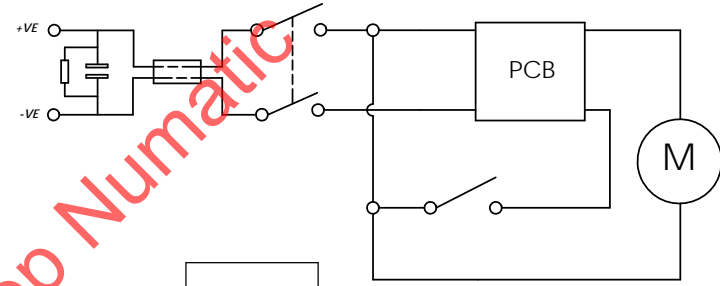
Model No: PVR 200A/ 370A/ 380A EXPLODED DRAWING

| ITEM: | PART No: | DESCRIPTION   | COMMENTS: |
|-------|----------|---|-----------|
| 1     | 227882   | BOTTOM MOTOR GASKET   |           |
| 2     | 229614   | MOTOR PLATE BI -MATERIAL  |           |
| 3     | 227132   | CABLE REEL MOULDING ASSEMBLY  |           |
|       | 227348   | CABLE REEL MOULDING ASSEMBLY ( V2 RATED )   | USA       |
| 4     | 333113   | CABLE REEL COVER ASSEMBLY (C/W WINDER KNOB)                                       |           |
|       | 333147   | CABLE REEL COVER ASSEMBLY (V2 RATED MATERIAL) (C/W WINDER KNOB)                   | USA       |
| 5     | 227436   | ROLLER WHEEL  |           |
| 6     | 229621   | AIR GUIDE   |           |
| 7     | 227108   | BLACK CABLE ENTRY   |           |
| 8     | 227120   | HANDLE  |           |
| 9     | 229715   | TOGGLE (TWIN SHOT)  |           |
| 10    | 229618   | BOTTOM MOTOR HOUSING (TWIN SHOT)  |           |
| 11    | 229623   | SWITCH COVER  |           |
|       | 229738   | SWITCH COVER (V2 RATED MATERIAL)  | USA       |
| 12    | 237132   | WIRE ENTRY ENCLOSURE (PVR FRONT SWITCH)   |           |
|       | 237133   | WIRE ENTRY ENCLOSURE V2 FLAME RETARDANT (PVR FRONT SWITCH)                        | USA       |
| 13    | 237129   | TOP MOTOR HOUSING (PVR FRONT SWITCH)  |           |
|       | 237130   | TOP MOTOR HOUSING V2 FLAME RETARDANT (PVR FRONT SWITCH)                           | USA       |
| 14    | 325812   | PVR BLACK AUTOSAVE COVER + HANDLE. PRINT WHITE NUMATIC+GREEN AUTOSAVE FLOWER LOGO |           |
| 15    | 208379   | SPRING CLIP (LAMB DAF MOTOR)  |           |
| 16    | 227141   | INNER CONTACT RING  |           |
| 17    | 227142   | OUTER CONTACT RING  |           |
| 18    | 203020   | POD SIDE FELT   |           |
| 19    | 230097   | AXIAL FERRITE BEAD  |           |
| 20    | 321990   | 1200W PCB BOARD   |           |
|       | 208300   | AUTOSAVE 2 SPEED CONTROL PCB (120V)   |           |
| 21    | 221102   | RED MOMENTARY ROCKER SWITCH (BLACK BODY / RED ILLUMINATION WINDOW)                |           |
| 22    | 220582   | GREEN ROCKER SWITCH   |           |
| 23    | 230096   | SUPPRESSOR CAPACITOR ASSEMBLY WITH DISCHARGE RESISTOR                             |           |
| 24    | 236116   | 12.5MT X 1MM X 2 CORE (H05 V2V2-F) UK PLUG  |           |
|       | 220251   | 12.5MT X 1.0MM X 2 CORE CABLE + EURO PLUG   |           |
|       | 220192   | 12.5MT X 1.0MM X 2 CORE CABLE C/W SWISS PLUG                                      |           |
|       | 220467   | 12.5MT X 1MMSQ X 2 CORE M/CABLE + RSA PLUG  |           |
|       | 236044   | 10.0M X 1.00MM X 2 CORE CABLE (AUSTRALIAN PLUG)                                   |           |
|       | 236049   | 10.0M X 1.50MM X 2 CORE CABLE (INDUSTRIAL PLUG)                                   |           |
|       | 236041   | 10.0M X 18AWG X 2 CORE CABLE (YELLOW) SJT + CSA PLUG                              |           |
| 25    | 205403   | 230V 2 STAGE THRO FLOW TAPER FAN MOTOR (DL21104T) TCO                             |           |
|       | 205401   | 120V 2 STAGE THRO FLOW TAPER FAN MOTOR (DL21101T) TCO                             |           |
| 26    | 219601   | No8 X 3/8 INCH LONG POZI PAN PLASTITE SCREW                                       |           |
| 27    | 219090   | M4 X 8MM LONG POZI PAN SEMS SCREW   |           |
| 28    | 219101   | No8 X 1/2 INCH LONG POZI PAN PLASTITE SCREW                                       |           |
| 29    | 219104   | No8 X 1 INCH LONG POZI PAN PLASTITE SCREW   |           |
| 30    | 225301   | RED 200 DRUM (NO PADS)  |           |
|       | 225191   | RED MOULDED DRUM PLUS FACE  |           |
|       | 227374   | NNV 200 MIDNIGHT BLUE MOULDED DRUM  |           |
|       | 225304   | NNV200 YELLOW MOULDED DRUM  |           |
|       | 225303   | NNV200 GREEN MOULDED DRUM   |           |
|       | 225302   | NNV200 BLUE MOULDED DRUM  |           |
|       | 225170   | NNV/NRV 200 DRUM GREY MOULDED   |           |
| 31    | 229768   | BAG CONNECTOR (2006)  | 200 DRUM  |
| 32    | 227640   | 2 SHOT WHEEL ASSEMBLY   |           |
| 33    | 227868   | WHEEL HUB FOR 2 SHOT WHEEL  |           |
| 34    | 227687   | RED TRIM  |           |
|       | 229777   | MIDNIGHT BLUE TRIM  |           |
|       | 227690   | YELLOW TRIM   |           |
|       | 227638   | BLACK TRIM  |           |
|       | 227689   | GREEN TRIM  |           |
|       | 227688   | BLUE TRIM   |           |
| 35    | 204111   | 50MM TWIN WHEEL CASTOR WITH PU TYRE   |           |
| 36    | 207109   | 12 INCH FILTER (DOUBLE BOTTOM) 160GRM SMS   |           |
| 37    | 219105   | No8 X 5/8 INCH LONG POZI PAN PLASTITE SCREW                                       |           |
| 38    | 227608   | 370 RED DRUM  |           |
| 39    | 227363   | BAG CONNECTOR   | 370 DRUM  |
| 40    | 225904   | RED CONTAINER   | 380       |
| 41    | 227004   | BAG CONNECTOR   | 380 DRUM  |
| 42    | 204059   | 2 INCH CASTOR   | 380 DRUM  |
| 43    | 227396   | RED THREADED NECK   |           |

THIRD ANGLE PROJECTION



SCHEMATIC DIAGRAM



**Numatic INTERNATIONAL LTD**  
 MILLFIELD ROAD, CHARD, SOMERSET TA20 2GB ENGLAND

THIS DRAWING IS COPYRIGHT AND IS THE PROPERTY OF NUMATIC INTERNATIONAL LTD. AND MUST NOT BE USED WITHOUT THEIR KNOWLEDGE NOR COMMUNICATED TO ANY PERSON OR COMPANY.

THE EXAMPLE SHOWN DETAILS THE METHOD USED FOR IDENTIFYING CRITICAL (INSPECTION) DIMENSIONS WHERE APPLICABLE

**TOLERANCES:-** LINEAR: 0 DECIMAL PLACE = +/- 1.0mm ANGULAR:-  
 1 DECIMAL PLACE = +/- 0.25mm +/- 0.5 DEGREE  
 2 DECIMAL PLACES = +/- 0.05mm  
 (UNLESS OTHERWISE STATED)

**TITLE:-**  
 (WD-0368) AUTOSAVE 12 INCH REWIND WIRING DIAGRAM (230V)

DIMNs IN MILLIMETERS **MATERIAL:-** **ITEM No(s):-**  
 123339

**FINISH:-** **DRG No:-**  
 WD-0368

All components must be ROHS compliant.

|           |                         |         |       |          |               |              |
|-----------|-------------------------|---------|-------|----------|---------------|--------------|
| A03       | SCHEMATIC DIAGRAM ADDED | marcusa | IanL  | 10/02/10 | PRINT SIZE A4 | NOT TO SCALE |
| REVISION: | CHANGE DETAIL:          | DRAWN:  | APPD: | DATE:    |               |              |