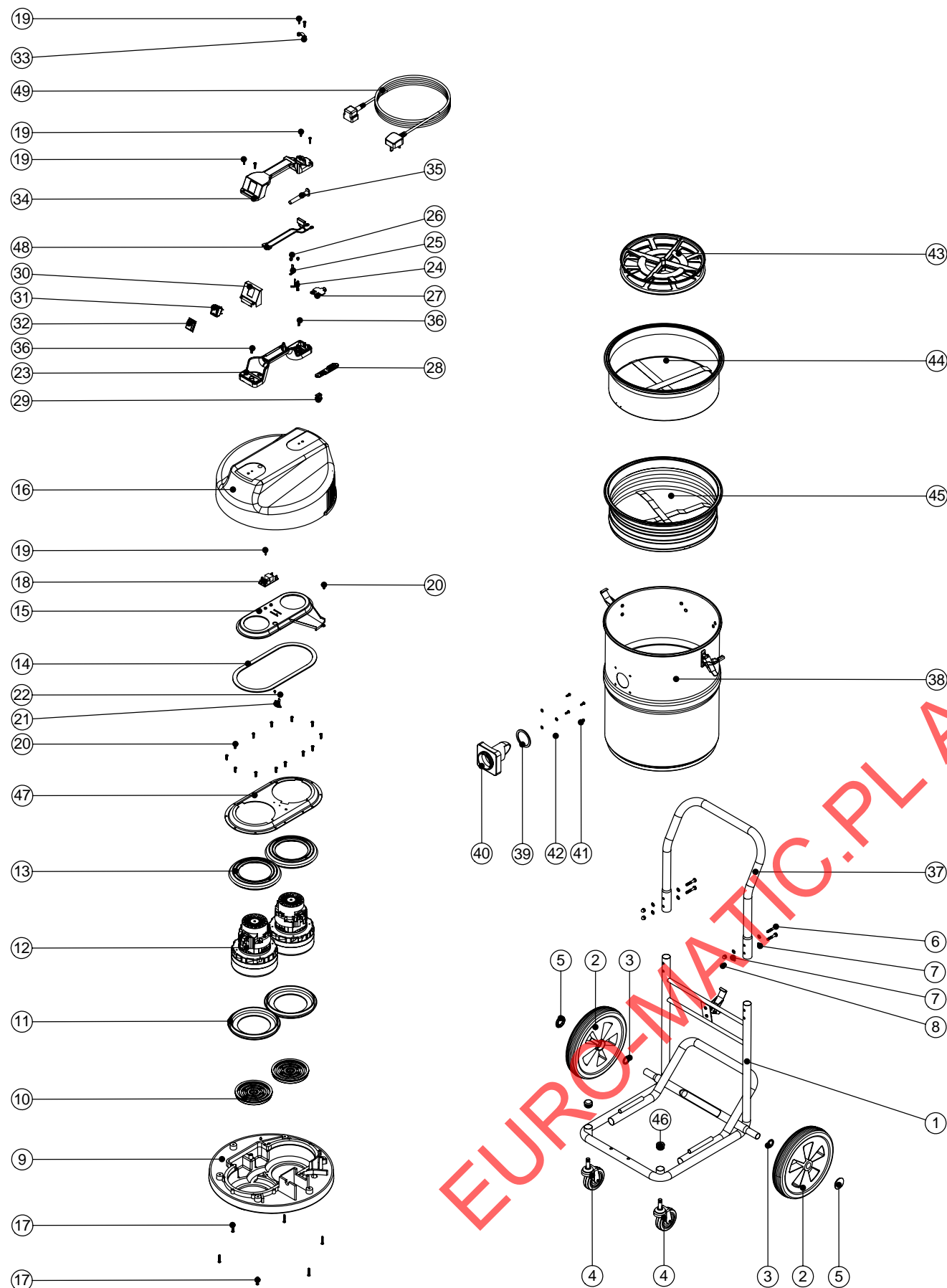


# Numatic International Spare Parts

## Model No: NTD750-2 EXPLODED DRAWING

234365  
DRAWING: EXP-0796 ISS:A02  
16/06/2006



# Numatic International Spare Parts

## Model No: NTD750-2 EXPLODED DRAWING

POS:	ITEM NO:	DESCRIPTION:	COMMENTS:
1	402136	HEAVY DUTY FIXED CHASSIS (PAINTED BLACK)	
2	204028	10 INCH WHEEL	
3	219505	NYLON WASHER	
4	204060	3 INCH CASTOR	
5	219504	STARLOCK PUSH ON FASTENER	
6	219064	M6 X 35MM LONG HEX BOLT	
7	219007	M6 FORM B WASHER	
8	219080	M6 DOMENUT	
9	301048	PROCESSED BOTTOM MOTOR HOUSING	
10	206010	FAN GUARD	
11	202005	MOTOR BOTTOM GASKET	
12	205411	240V 2 STAGE D.I BYPASS ACUSTEK MOTOR (BL21104)(MARKED 230V)	240V VERSION
	205410	220V 2 STAGE D.I BYPASS ACUSTEK MOTOR (BL21102) (MARKED 230V)	220V VERSION
	205409	120V 2 STAGE D.I BYPASS ACUSTEK MOTOR (BL21101)	115V VERSION
13	202003	TOP MOTOR GASKET	
14	202012	GASKET	
15	225154	AIR SEPARATOR DUPLEX	
16	227043	COVER MOULDING	
17	219369	No8 X 1 INCH LONG POZI PAN STAINLESS STEEL PLASTITE SCREW	
18	220555	230V DELAY START MODULE	220/240V VERSION
	220556	115V DELAY START MODULE	115V VERSION
19	219107	No6 X 5/8 INCH LONG POZI PAN PLASTITE SCREW	
20	219370	No8 X 5/8 INCH LONG PLASTITE STAINLESS STEEL SCREW	
21	220532	THERMOSTAT	
22	219491	M5 X 3MM LONG POZI PAN TAPTITE SCREW	
23	320835	HANDLE BASE MOULDING + INSERTS	
24	206562	CONTACT PIN	
25	206563	EARTH CONTACT PIN	
26	219090	M4 X 8MM LONG POZI PAN SEMS SCREW	
27	227631	TERMINAL COVER & CLAMP (3 PIN)	
28	227636	STRAIN RELIEF	
29	227637	CABLE CLIP	
30	227635	SWITCH MOUNTING BRACKET (1 SWITCH)	
31	220552	RED ROCKER SWITCH	
32	206573	SWITCH COVER (PLUG HANDLE)	
33	227564	PLUG LOCATION CLAMP	
34	227623	HANDLE COVER (10 AMP / 3 PIN / 1 SWITCH)	
	227627	HANDLE COVER HARD WIRE 1 SWITCH	HARD WIRED VERSION
35	220923	STRESS RELIEF	
36	219546	M5 X 20MM LONG POZI PAN SEMS SCREW	
37	402200	BLACK PLASTIC COATED HANDLE	
38	400143	750 DRUM PAINT SILVER	
39	202027	HOSE FLANGE GASKET	
40	206024	DRY HOSE CONNECTOR FLANGE	
41	219101	No8 X 1/2 INCH LONG POZI PAN PLASTITE SCREW	
42	219003	M5 FORM A STEEL WASHER	
43	209600	DOUBLE 12 INCH FILTER GRID (GROOVED CIRCULAR RIB)	
44	207032	RED FILTER + MOULDING GASKET	
45	207166	WHITE FILTER + RING	
46	20637V	25.4MM TUBE END STOP	
47	325526	TOP MOTOR HOUSING (DUPLEX)	
48	220142	SUPPRESSOR ASSEMBLY	240V VERSION
	230234	SUPPRESSOR ASSEMBLY	220V VERSION
	220558	SUPPRESSOR ASSEMBLY	115V VERSION
49	236010	10.0M X 1.00MM X 3 CORE NUCABLE (UK PLUG)	
	236014	10.0M X 1.00MM X 3 CORE NUCABLE (EURO PLUG)	
	236018	10.0M X 1.00MM X 3 CORE NUCABLE (SWISS PLUG)	
	236022	10.0M X 1.00MM X 3 CORE NUCABLE (SOUTH AFRICAN PLUG)	
	236030	10.0M X 1.00MM X 3 CORE NUCABLE (AUSTRALIAN PLUG)	
	236065	10M X 2CORE X 2.5MM CABLE PLUS 32AMP INDUSTRIAL PLUG	115V VERSION