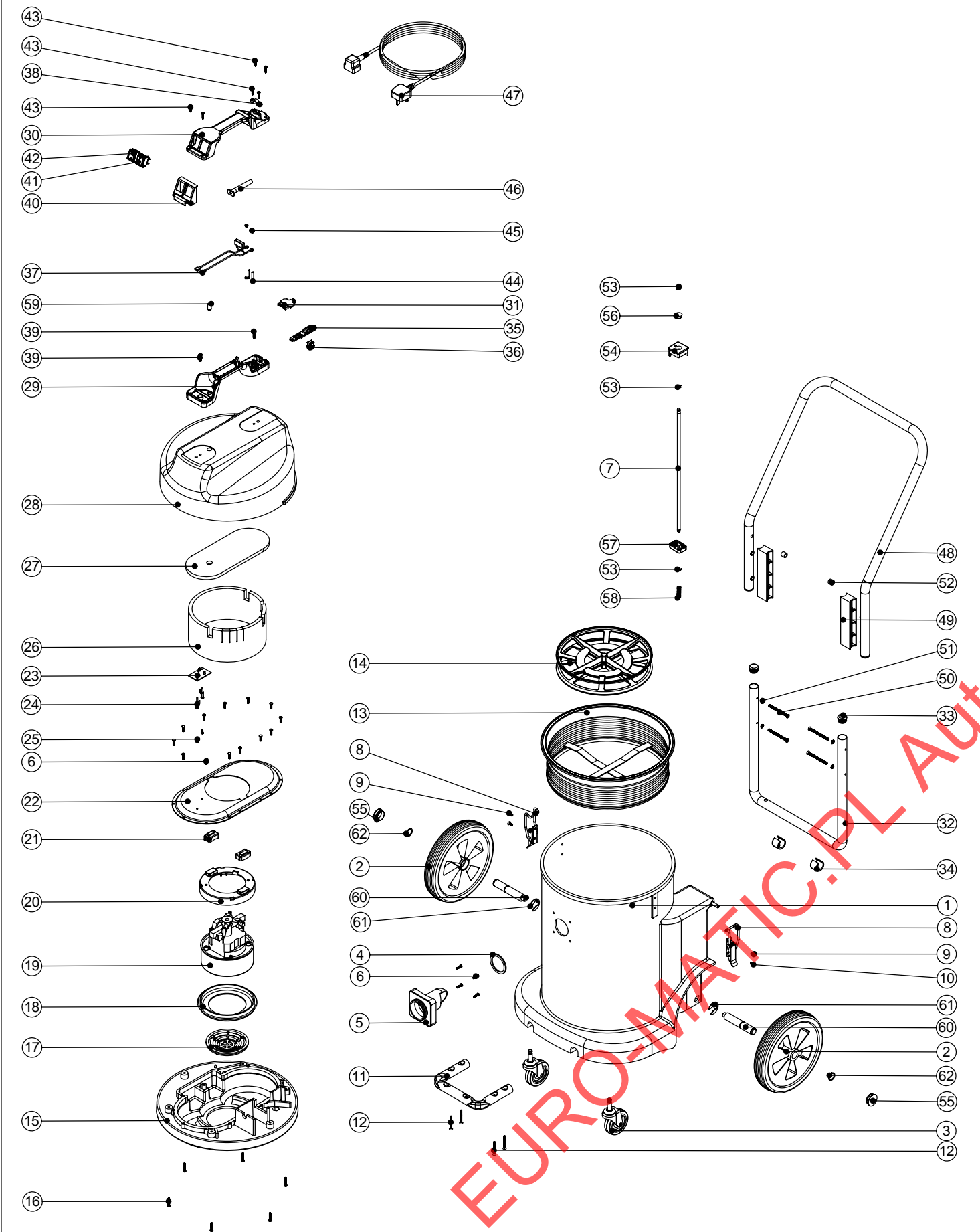


# Numatic International Spare Parts

## Model No: NVQ 900-22 EXPLODED DRAWING

234266  
DRAWING: EXP-0697 ISS:A02  
15/06/2006



# Numatic International Spare Parts

## Model No: NVQ 900-22 EXPLODED DRAWING

POS:	ITEM NO:	DESCRIPTION:	COMMENTS:
1	325130	GREY CONTAINER	
	325407	SUNFLOWER YELLOW CONTAINER	
	325046	YELLOW CONTAINER	
	325045	GREEN CONTAINER	
	300076	RED CONTAINER	
	300075	NUPRO BLUE CONTAINER	
2	204028	10 INCH WHEEL	
3	204060	3 INCH CASTOR	
4	202027	HOSE FLANGE GASKET	
5	206024	DRY HOSE CONNECTOR FLANGE	
6	219105	No8 X 5/8 INCH LONG POZI PAN PLASTITE SCREW	
7	206133	LOCKING BAR	
8	206135	TOGGLE FASTENER	
9	219047	M5 X 10MM LONG POZI PAN SEMS SCREW	
10	219330	M5 X 12MM LONG POZI PAN COUNTRSUNK SCREW	
11	303127	TOOL MOUNTING BAR	
12	219316	No10 X 43MM LONG POZI PAN COUNTER SUNK PLASTITE SCREW	
13	207030	WHITE FILTER ASSEMBLY	
14	209600	DOUBLE 12 INCH FILTER GRID (GROOVED CIRCULAR RIB)	
15	301175	PROCESSED BOTTOM MOTOR HOUSING	
16	219104	No8 X 1 INCH LONG POZI PAN PLASTITE SCREW	
17	227887	FAN GUARD	
18	202005	MOTOR BOTTOM GASKET	
19	205403	240V 2 STAGE THRO FLOW TAPER FAN MOTOR (DL21104T) TCO	
	205402	220V 2 STAGE THRO FLOW TAPER FAN MOTOR (DL21102T) TCO	
	205401	120V 2 STAGE THRO FLOW TAPER FAN MOTOR (DL21101T) TCO	
20	227886	MOTOR SPACER (LAMB DAF MOTOR)	
21	227885	MOUNTING RUBBER	
22	327101	MODIFIED TOP MOTOR HOUSING	
23	324103	NUMATIC 2 SPEED CONTROL PCB (240V) 220MB BLUE BOARD	
	324102	NUMATIC 2 SPEED CONTROL PCB (120V) RED BOARD DRILLED 4MM	
	324101	NUMATIC 2 SPEED CONTROL PCB (220V) BLACK BOARD DRILLED 4MM	
24	220763	P.C.B. STANDOFF	
25	219301	No6 X 3/8 INCH LONG POZI PAN SELF TAP SCREW	
26	203015	SIDE FELT	
27	203014	TOP FELT	
28	227045	BLACK COVER MOULDING & INSERTS SINGLE GRILL	
29	320686	HANDLE BASE MOULDING	
30	227624	HANDLE COVER 10AMP 2PIN 2 SWITCH	
	227626	HANDLE COVER HARD WIRE 2 SWITCH	
31	227632	TERMINAL COVER & CLAMP	
32	303128	LOWER HANDLE	
33	20637V	25.4MM TUBE END STOP	
34	206295	PLASTIC SADDLE FOOT	
35	227636	STRAIN RELIEF	
36	227637	CABLE CLIP	
37	220142	SUPPRESSOR ASSEMBLY	
38	227564	PLUG LOCATION CLAMP	
39	219546	M5 X 20MM LONG POZI PAN SEMS SCREW	
40	227629	SWITCH MOUNTING BRACKET	
41	220552	RED ROCKER SWITCH	
42	220243	BLACK/GREEN ROCKER SWITCH	
43	219107	No6 X 5/8 INCH LONG POZI PAN PLASTITE SCREW	
44	206562	CONTACT PIN	
45	219090	M4 X 8MM LONG POZI PAN SEMS SCREW	
46	220923	STRESS RELIEF	
47	236009	10.0M X 1.00MM X 2 CORE NUCABLE (UK PLUG)	
	220954	12.5M X 1.00MM X 2 CORE NUCABLE (EURO PLUG)	
	236049	10.0M X 1.50MM X 2 CORE CABLE (INDUSTRIAL PLUG)	
48	329169	HANDLE ASSEMBLY	
49	206128	HANDLE BLOCK SPACER	
50	219422	M6 X 70MM LONG POZI PAN COUNTERSUNK SCREW	
51	219423	M6 COUNTERSUNK LOCK WASHER	
52	21985V	SPACER	
53	219307	E CLIP	
54	206126	LOCKING BAR KNOB	
55	206131	BLACK PLASTIC CAP	
56	206132	BLACK PLASTIC CAP	
57	206127	LOCKING BAR SUPPORT	
58	219312	COMPRESSION SPRING	
59	229240	END TIP	
60	206137	STUB AXLE	
61	219306	E-CLIP	
62	219308	CIRCLIP	